



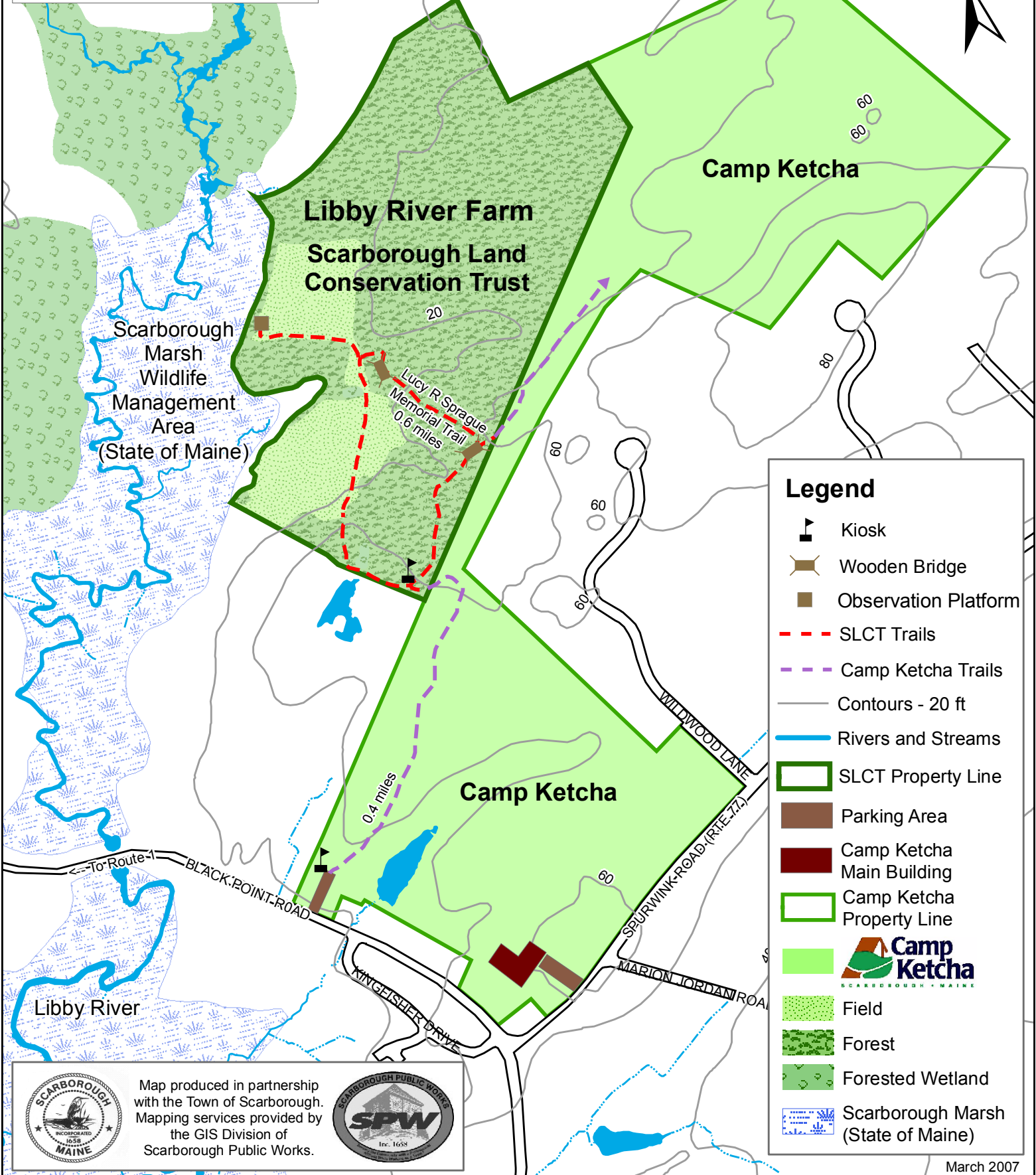
Scarborough Land Conservation Trust
 PO Box 1237
 Scarborough, ME
 04070-1237

www.scarboroughcrossroads.org/slct

Libby River Farm Trails

123 Acres of Conserved Land
 Protected, Managed, and Owned by the
 Scarborough Land Conservation Trust (SLCT)

0 0.05 0.1 0.2 Miles



Legend

- Kiosk
- Wooden Bridge
- Observation Platform
- SLCT Trails
- Camp Ketcha Trails
- Contours - 20 ft
- Rivers and Streams
- SLCT Property Line
- Parking Area
- Camp Ketcha Main Building
- Camp Ketcha Property Line
- Camp Ketcha**
SCARBOROUGH • MAINE
- Field
- Forest
- Forested Wetland
- Scarborough Marsh (State of Maine)



Map produced in partnership
 with the Town of Scarborough.
 Mapping services provided by
 the GIS Division of
 Scarborough Public Works.

